

**LET
MATERIALS
TELL YOUR
STORY**

COLOURS & MATERIALS | 2024

Fabio : P

Zusammensetzung: 100% Polyester FR
Gewicht: ca. 560 g/m
Breite: 140 cm
Lichtechtheit: Note 5–8 (DIN EN ISO 105-B02)
Pilling: Note 5 (DIN EN ISO 12945/2)
Reibechtheit: nass: 4–5 / trocken: 4–5 (DIN EN ISO 105-X12)
Scheuerfestigkeit: 80.000 Touren (Martindale); DIN EN ISO 12947-2)
Brandverhalten: DIN EN 1021: Teil 1/2, DIN 4102 B1, NF-P 92-503 Klasse M1, BS 5852 IS 0+1, Crib 5, UN2 9175/87 (1. IM)

Composition: 100% Polyester FR
Weight: approx. 560 g/m
Width: 140 cm
Light fastness: value 5–8 (DIN EN ISO 105-B02)
Pilling: value 5 (DIN EN ISO 12945/2)
Fastness to rubbing: wet: 4–5 / dry: 4–5 (DIN EN ISO 105-X12)
Abrasion resistance: 80.000 rubs (Martindale); DIN EN ISO 12947-2)
Flammability: DIN EN 1021: Part 1/2, DIN 4102 B1, NF-P 92-503 class M1, BS 5852 IS 0+1, Crib 5, UN2 9175/87 (1. IM)



012.047 (3094)
Mandarine
Mandarine



012.041 (4028)
Feuerrot
Züco red



012.048 (4517)
Shirazrot
Shiraz red



012.020 (6075)
Standardblau
Classic blue



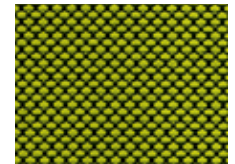
012.027 (6071)
Königsblau
Royal blue



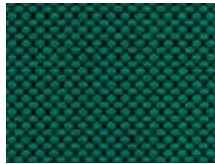
012.022 (6571)
Dunkelblau
Deep blue



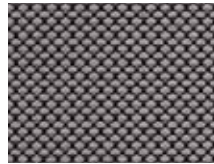
012.029 (6598)
Nachtblau
Midnight blue



012.011 (7541)
Hellgrün
Vivid green



012.110 (7508)
Dunkelgrün
Dark green



012.031 (8532)
Platingrau
Platin



012.039 (8517)
Javagrau
Java grey



012.033 (8033)
Schwarz
Midnight black

Polo : P

Zusammensetzung: 100% Polyester
Gewicht: ca. 350 g/m
Breite: 140 cm
Lichtechtheit: Note 6 (DIN EN ISO 105-B02)
Reibechtheit: nass: 4–5 / trocken: 4–5 (DIN EN ISO 105-X12)
Scheuerfestigkeit: 150.000 Touren (Martindale); DIN EN ISO 12947)
Brandverhalten: DIN EN 1021: Teil 1/2

Composition: 100% Polyester
Weight: approx. 350 g/m
Width: 140 cm
Light fastness: value 6 (DIN EN ISO 105-B02)
Fastness to rubbing: wet: 4–5 / dry: 4–5 (DIN EN ISO 105-X12)
Abrasion resistance: 150.000 rubs (Martindale); DIN EN ISO 12947)
Flammability: DIN EN 1021: Part 1/2



077.050 (1008)
Cappuccino
Cappuccino



077.044 (3012)
Orange
Orange



077.040 (4011)
Chillrot
Chilli red



077.048 (4017)
Shirazrot
Shiraz red



077.120 (6006)
Hellblau
Light blue



077.025 (6003)
Wasserblau
Lagoon blue



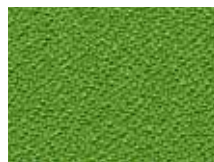
077.021 (6075)
Azurblau
Azure blue



077.020 (6016)
Standardblau
Classic blue



077.011 (7032)
Hellgrün
Vivid green



077.010 (7048)
Grün
Organic green



077.110 (7008)
Dunkelgrün
Dark green



077.029 (6098)
Nachtblau
Midnight blue



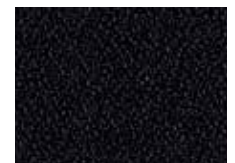
077.031 (8078)
Platingrau
Platin



077.030 (8010)
Grau
Metal grey



077.032 (8013)
Steingrau
Stone grey



077.033 (8033)
Schwarz
Midnight black

Era : A

Zusammensetzung: 100% Polyester
Gewicht: ca. 320 g/m
Breite: 140 cm
Lichtechtheit: Note 5 (DIN EN ISO 105-B02)
Pilling: Note 4–5 (DIN EN ISO 12945/2)
Reibechtheit: nass: 4 / trocken: 4 (DIN EN ISO 105-X12)
Scheuerfestigkeit: 100.000 Touren (Martindale; DIN EN ISO 12947)
Brandverhalten: DIN EN 1021: Teil 1/2

Composition: 100% Polyester
Weight: approx. 320 g/m
Width: 140 cm
Light fastness: value 5 (DIN EN ISO 105-B02)
Pilling: value 4–5 (DIN EN ISO 12945/2)
Fastness to rubbing: wet: 4 / dry: 4 (DIN EN ISO 105-X12)
Abrasion resistance: 100.000 rubs (Martindale; DIN EN ISO 12947)
Flammability: DIN EN 1021: Part 1/2



086.003 (CSE03)
 Honiggelb
 Honey yellow



086.046 (CSE19)
 Pink
 Pink orchid



086.045 (CSE29)
 Kupferrot
 Pure Copper



086.043 (CSE06)
 Samtrot
 Red velvet



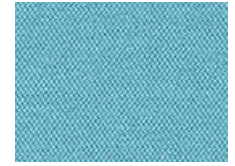
086.025 (CSE38)
 Wasserblau
 Lagoon blue



086.120 (CSE08)
 Hellblau
 Light blue



086.020 (CSE12)
 Standardblau
 Classic blue



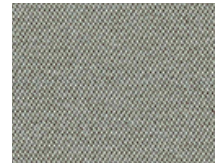
086.023 (CSE20)
 Türkis
 Caribbean blue



086.016 (CSE34)
 Wassergrün
 Ice green



086.011 (CSE16)
 Hellgrün
 Vivid green



086.050 (CSE02)
 Cappuccino
 Cappuccino



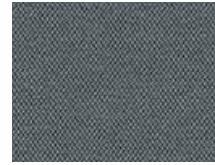
086.052 (CSE21)
 Fango
 Fango



086.031 (CSE41)
 Platingrau
 Platin



086.030 (CSE43)
 Grau
 Metal grey



086.036 (CSE13)
 Anthrazitgrau
 Asphalt grey



086.033 (CSE14)
 Schwarz
 Midnight black

King : A

Zusammensetzung: 100% Trevira CS® (Polyester)
Gewicht: ca. 420 g/m
Breite: 140 cm
Lichtechtheit: Note 6 (DIN EN ISO 105-B02)
Pilling: Note 4–5 (DIN EN ISO 12945/2)
Reibechtheit: nass: 4–5 / trocken: 4–5 (DIN EN ISO 105-X12)
Scheuerfestigkeit: 100.000 Touren (Martindale; DIN EN ISO 12947)
Brandverhalten: DIN EN 1021: Teil 1/2, DIN 4102 B1, NF-P 92-503 Klasse M1, BS 5852 IS 0+1, Crib 5, UN2 9175/87 (1. IM)
Composition: 100% Trevira CS® (polyester)
Weight: approx. 420 g/m
Width: 140 cm
Light fastness: value 6 (DIN EN ISO 105-B02)
Pilling: value 4–5 (DIN EN ISO 12945/2)
Fastness to rubbing: wet: 4–5 / dry: 4–5 (DIN EN ISO 105-X12)
Abrasion resistance: 100.000 rubs (Martindale; DIN EN ISO 12947)
Flammability: DIN EN 1021: Part 1/2, DIN 4102 B1, NF-P 92-503 class M1, BS 5852 IS 0+1, Crib 5, UN2 9175/87 (1. IM)



081.044 (4030)
 Orange
 Orange



081.041 (4027)
 Feuerrot
 Züco red



081.040 (9244)
 Chillirost
 Chilli red



081.042 (4017)
 Rubinrot
 Ruby red



081.120 (9606)
 Hellblau
 Light blue



081.021 (6071)
 Azurblau
 Azure blue



081.020 (9268)
 Standardblau
 Classic blue



081.025 (6018)
 Wasserblau
 Lagoon blue



081.011 (7011)
 Hellgrün
 Vivid green



081.010 (7013)
 Grün
 Organic green



081.110 (7008)
 Dunkelgrün
 Dark green



081.022 (6098)
 Dunkelblau
 Deep blue



081.031 (8027)
 Platingrau
 Platin



081.030 (9289)
 Grau
 Metal grey



081.032 (8010)
 Steingrau
 Stone grey



081.033 (8033)
 Schwarz
 Midnight black



Relax: A

Zusammensetzung: 100% Trevira CS® (Polyester)
Gewicht: ca. 450 g/m
Breite: 140 cm
Lichtechtheit: Note 6 (DIN EN ISO 105-B02)
Pilling: Note 5 (DIN EN ISO 12945/2)
Reibechtheit: nass: 4–5 / trocken: 4–5 (DIN EN ISO 105-X12)
Scheuerfestigkeit: 100.000 Touren (Martindale; DIN EN ISO 12947)
Brandverhalten: DIN EN 1021: Teil 1/2, DIN 4102 B1, NF-P 92-503 Klasse M1, BS 5852 IS 0+1, Crib 5, UN2 9175/87 (1. IM)

Composition: 100% Trevira CS® (polyester)
Weight: approx. 450 g/m
Width: 140 cm
Light fastness: value 6 (DIN EN ISO 105-BO2)
Pilling: value 5 (DIN EN ISO 12945/2)
Fastness to rubbing: wet: 4–5 / dry: 4–5 (DIN EN ISO 105-X12)
Abrasion resistance: 100.000 rubs (Martindale, DIN EN ISO 12947)
Flammability: DIN EN 1021: Part 1/2, DIN 4102 B1, NF-P 92-503 class M1, BS 5852 IS 0+1, Crib 5, UN2 9175/87 (1. IM)



100.020 (6080)
Standardblau
Classic blue



103.039 (8502)
Javagrau
Java grey



100.033 (8033)
Schwarz
Midnight black

100.xxx = Relax: A einfarbig | one colour

103.xxx = Relaxbico: A zweifarbig | two-tone

Tonal : A (Web T)

Zusammensetzung: 100 % recyceltes Polyester
 Gewicht: ca. 315 g/m
 Breite: 140 cm
 Lichtechtheit: Note 6 – 8 (DIN EN ISO 105-B02)
 Pilling: Note 4 – 5 (DIN EN ISO 12945/2)
 Reibechtheit: nass: 4 – 5 / trocken: 4 – 5 (DIN EN ISO 105-X12)
 Scheuerfestigkeit: 100.000 Touren (Martindale; DIN EN ISO 12947-2)
 Brandverhalten: US CA TB 117-2013, ASTM E 84, BS EN 1021: Teil 1/2, BS EN 1021-1, BS 5852 Part 1, 0,1, BS 476 Part 7, class 1

* Farbauswahl Web T (185.xxx)
 (Textil-Rückenlehne Shape mesh comfort)

Nachhaltiges Design

Tonal:A wird aus recyceltem Polyester hergestellt, ist nach Öko-Text und EU-Umweltzeichen zertifiziert und hat somit eine sehr positive Ökobilanz. Die Kombination von hellen und dunklen Tönen schafft Tiefe und sorgt mit einem dreidimensionalen Effekt für eine dynamische Optik.

- Harmonischer Melange-Effekt und lebendiger Look
- Breite Farbpalette und Mischung aus dunklen und hellen Farbtönen
- Recyceltes Post-Consumer-Polyester, Öko-Text und EU-Umweltzeichen zertifiziert

Composition: 100% Post-consumer recycled polyester approx. 315 g/m
 Weight: approx. 315 g/m
 Width: 140 cm
 Light fastness: value 6 – 8 (DIN EN ISO 105-B02)
 Pilling: value 4 – 5 (DIN EN ISO 12945/2)
 Fastness to rubbing: wet: 4 – 5 / dry: 4 – 5 (DIN EN ISO 105-X12)
 Abrasion resistance: 100.000 rubs (Martindale; DIN EN ISO 12947-2)
 Flammability: US CA TB 117-2013, ASTM E 84, BS EN 1021: Part 1/2, BS EN 1021-1, BS 5852 Part 1, 0,1, BS 476 Part 7, class 1

* Colours selection Web T (185.xxx)
 (textile backrest Shape mesh comfort)

Sustainable design

Made from recycled post-consumer polyester and Oeko-Text and EU Ecolabel certified, Tonal:A has an excellent environmental profile. The fusion of light and dark tones adds depth and creates a three-dimensional effect.

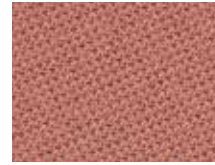
- Harmonious melange effect and vibrant look
- Comprehensive colour palette and blend of deep and bright hues
- Recycled post-consumer polyester, Oeko-Text and EU Ecolabel certified



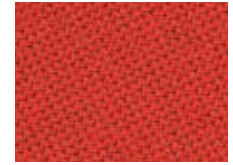
165.004 (62057)
Currygelb
Curry yellow



165.044* (63098)
Orange
Orange



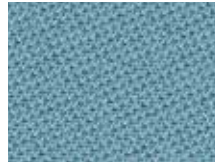
165.046 (64210)
Pink
Pink orchid



165.047* (64207)
Mandarine
Mandarine



165.042 (64209)
Rubinrot
Ruby red



165.025 (66185)
Wasserblau
Lagoon blue



165.011* (62092)
Hellgrün
Vivid green



165.016 (67089)
Wassergrün
Ice green



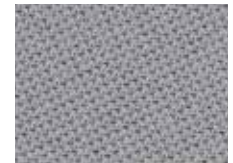
165.018* (67090)
Opalgrün
Opal green



165.014* (66186)
Petrolgrün
Jade green



165.031* (60122)
Platingrau
Platin



165.030* (60123)
Grau
Metal grey



165.050 (61180)
Cappuccino
Cappuccino



165.052 (61182)
Fango
Fango



165.066 (64211)
Mittelbraun
Auburn



165.033* (60999)
Schwarz
Midnight black

Valencia : A

Sehr robustes Kunstleder, langlebig,
desinfektionsmittelbeständig*

Zusammensetzung: Beschichtung: 100 % Vinyl/
Träger: 100 % Polyester Hi-Loft^{2™}
ca. 650 g/m²
Gewicht: 137 cm
Breite: 137 cm
Lichtechtheit: Note 7 – 8 (DIN EN ISO 105-B02)
Scheuerfestigkeit: 300.000 Touren (Martindale);
DIN EN ISO 12947-2)
Brandverhalten: DIN EN 1021: Teil 1/2,
NF-P 92-503 Klasse M2,
DIN 4102 B2

*empfohlene Desinfektionsmittel auf Anfrage

Very strong synthetic leather, durable,
resistant to disinfectants*

Composition: Topcoat: 100 % Vinyl/
Backing: 100 % Polyester Hi-Loft^{2™}
approx. 650 g/m²
Weight: 137 cm
Width: 137 cm
Light fastness: value 7 – 8 (DIN EN ISO 105-B02)
Abrasion resistance: 300.000 rubs (Martindale;
DIN EN ISO 12947-2)
Flammability: DIN EN 1021: Part 1/2,
NF-P 92-503 class M2,
DIN 4102 B2

*recommended disinfectants on request



006.001 (107-2020)
Leuchtgelb
Luminous yellow



006.040 (107-2075)
Chillirod
Chilli red



006.025 (107-3001)
Wasserblau
Lagoon blue



006.020 (107-3067)
Standardblau
Classic blue



006.022 (107-3068)
Dunkelblau
Deep blue



006.010 (107-5041)
Grün
Organic green



006.030 (107-4042)
Grau
Metal grey



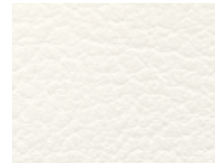
006.039 (107-4002)
Javagrau
Java grey



006.031 (107-4043)
Platingrau
Platin



006.070 (107-8032)
Polarweiß
Arctic white



006.073 (107-8020)
Reinweiß
Pure white



006.033 (107-9035)
Schwarz
Midnight black

X-Knit : A (Web X)

Zusammensetzung: 100 % Wovenit® 3D
(Polyamidhybrid*)
ca. 290 g/m²
Gewicht: Note 6 (DIN EN ISO 105-B02)
Lichtechtheit: Note 5 (DIN EN ISO 12945/2)
Pilling: nass: 5 / trocken: 5
Reibechtheit: (DIN EN ISO 105-X12)
Scheuerfestigkeit: 100.000 Touren (Martindale)
Brandverhalten: DIN EN 1021: Teil 1/2

*Polyamidhybridfasern sind extrem haltbar und da-
durch resistent gegen Scheuerbeanspruchung. Die
leichte und feine Faser hat eine hohe Elastizität bei
garantierter Formbeständigkeit und trocknet schnell.
Nur für X-Code (Sitz ohne Wellenstruktur).

Composition: 100 % Wovenit® 3D
(polyamide hybrid*)
approx. 290 g/m²
Weight: value 6 (DIN EN ISO 105-B02)
Light fastness: value 5 (DIN EN ISO 12945/2)
Pilling: wet: 5 / dry: 5
Fastness to rubbing: (DIN EN ISO 105-X12)

Abrasion resistance: 100.000 rubs (Martindale)
Flammability: DIN EN 1021: Part 1/2

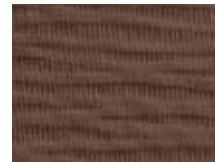
*Polyamide hybrid fibres are extremely durable
and therefore resistant to the effects of abrasion.
Lightweight and fine, they offer high elasticity,
guaranteed dimensional stability and dry quickly.
Only for X-Code (seat without wave structure).



063.044
Orange
Orange



063.041
Feuerrot
Züco red



063.063
Torfbraun
Torf



063.019
Indigoblau
Indigo blue



063.022
Dunkelblau
Deep blue



063.010
Grün
Organic green



063.031
Platingrau
Platin



063.035
Graphitgrau
Graphite



063.033
Schwarz
Midnight black

Fame : B

Zusammensetzung: 95% New Zealand-Wolle,
5% Polyamid
Gewicht: ca. 630 g/m
Breite: ca. 140 cm
Lichtechtheit: Note 5–7 (DIN EN ISO 105-B02)
Pilling: Note 4 (DIN EN ISO 12945/2)
Reibechtheit: nass: 4–5 / trocken: 4–5
(DIN EN ISO 105-X12)
Scheuerfestigkeit: 200.000 Touren (Martindale;
DIN EN ISO 12947-2)
Brandverhalten: DIN EN 1021: Teil 1/2

Composition: 95% New Zealand wool,
5% Polyamide
Weight: approx. 630 g/m
Width: approx. 140 cm
Light fastness: value 5–7 (DIN EN ISO 105-B02)
Pilling: value 4 (DIN EN ISO 12945/2)
Fastness to rubbing: wet: 4–5 / dry: 4–5
(DIN EN ISO 105-X12)
Abrasion resistance: 200.000 rubs (Martindale;
DIN EN ISO 12947-2)
Flammability: DIN EN 1021: Part 1/2



078.002 (62067)
Limonengelb
Lime yellow



078.044 (63016)
Orange
Orange



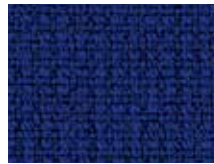
078.041 (64119)
Feuerrot
Züco red



078.040 (64089)
Chillirot
Chilli red



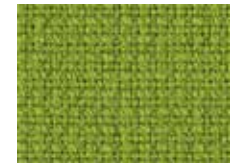
078.027 (66075)
Königsblau
Royal blue



078.020 (66032)
Standardblau
Classic blue



078.022 (66005)
Dunkelblau
Deep blue



078.010 (68035)
Grün
Organic green



078.036 (60017)
Anthrazitgrau
Asphalt grey



078.033 (60999)
Schwarz
Midnight black

Jet bioactive : B

Antimikrobiell, schwer entflammbar, angenehme Haptik, enthält das desinfizierende Biozid Silber
Zusammensetzung: 100% Trevira CS® bioactive*
(Polyester)
Gewicht: 365 g/m
Breite: 140 cm
Lichtechtheit: Note 6 (DIN EN ISO 105-B02)
Pilling: Note 5 (DIN EN ISO 12945/2)
Reibechtheit: nass: 4–5 / trocken: 4–5
(DIN EN ISO 105-X12)
Scheuerfestigkeit: 65.000 Touren
(Martindale; DIN EN ISO 12947-2)
Brandverhalten: DIN EN 1021: Teil 1/2
DIN 4102 Class B1
UNI 9175 Class 1 IM
NF-P 92501-7 Class M1
BS 5852 Crib 5

* antimikrobiell; enthält das desinfizierende Biozid Silber

Antimicrobial, flame retardant, soft-touch surface,
contains the disinfecting biocide silver
Composition: 100% Trevira CS® bioactive*
(polyester)
Weight: 365 g/m
Width: 140 cm
Light fastness: value 6 (DIN EN ISO 105-B02)
Pilling: value 5 (DIN EN ISO 12945/2)
Fastness to rubbing: wet: 4–5 / dry: 4–5
(DIN EN ISO 105-X12)
Abrasion resistance: 65.000 rubs (Martindale;
DIN EN ISO 12947-2)
Flammability: DIN EN 1021: Part 1/2;
DIN 4102 Class B1;
UNI 9175 Class 1 IM;
NF-P 92501-7 Class M1;
BS 5852 Crib 5

* antimicrobial; contains the disinfecting biocide silver



154.040 (9401)
Chillirot
Chilli red



154.020 (9601)
Standardblau
Classic blue



154.022 (6013)
Dunkelblau
Deep blue



154.023 (6007)
Türkis
Caribbean blue



154.011 (7041)
Hellgrün
Vivid green



154.031 (8001)
Platingrau
Platin



154.036 (9805)
Anthrazitgrau
Asphalt grey



154.033 (8033)
Schwarz
Midnight black

Parotega NF : B

Desinfektionsmittelbeständig*, schwer entflammbar, angenehme Haptik

Zusammensetzung: 85 % PVC-Compound, 15 % Baumwolle

Gewicht: ca. 700 g/m²

Breite: ca. 137 cm

Lichtechtheit: Note 5 (DIN EN ISO 105-B02)

Reibechtheit: nass: 4 / trocken: 4–5 (DIN EN ISO 105-X12)

Scheuerfestigkeit: 50.000 Touren (Martindale; DIN EN ISO 12947-2)

Brandverhalten: DIN EN 1021: Teil 1/2, DIN 4102 B1, NF-P 503 Klasse M1, BS 5852 IS 0+1, Crib 5, UN2 9175/87 (1. IM)

*empfohlene Desinfektionsmittel auf Anfrage

Resistant to disinfectants*, flame retardant, soft-touch surface

Composition: 85 % PVC-Compound, 15 % Cotton

Weight: approx. 700 g/m²

Width: approx. 137 cm

Light fastness: value 5 (DIN EN ISO 105-BO2)

Fastness to rubbing: wet: 4 / dry: 4–5

(DIN EN ISO 105-X12)

Abrasion resistance: 50.000 rubs (Martindale; DIN EN ISO 12947-2)

Flammability: DIN EN 1021: Teil 1/2,

DIN 4102 B1, NF-P 503 Class M1,

BS 5852 IS 0+1, Crib 5,

UN2 9175/87 (1. IM)

*recommended disinfectants on request



039.042 (F6461665)
Rubinrot
Ruby red



039.025 (F6461709)
Wasserblau
Lagoon blue



039.027 (F6461710)
Königsblau
Royal blue



039.052 (F6461658)
Fango
Fango



039.037 (F6461731)
Vulkangrau
Vulcan grey



039.033 (F6461659)
Schwarz
Midnight black

Runner : B (Web M)

Zusammensetzung: 80 % Polyester, 20 % Recyceltes Polyester

Gewicht: ca. 510 g/m

Breite: ca. 160 cm

Lichtechtheit: Note 5–7 (DIN EN ISO 105-B02)

Pilling: Note 5 (DIN EN ISO 12945/2)

Reibechtheit: nass: 4 / trocken: 5

(DIN EN ISO 105-X12)

Scheuerfestigkeit: 70.000 Touren (Martindale; DIN EN ISO 12947-2)

Brandverhalten: DIN EN 1021: Teil 1/2

Composition: 80 % Polyester, 20 % Post-consumer recycled polyester

Weight: approx. 510 g/m

Width: approx. 160 cm

Light fastness: value 5–7 (DIN EN ISO 105-BO2)

Pilling: value 5 (DIN EN ISO 12945/2)

Fastness to rubbing: wet: 4 / dry: 5

(DIN EN ISO 105-X12)

Abrasion resistance: 70.000 rubs (Martindale; DIN EN ISO 12947-2)

Flammability: DIN EN 1021: Part 1/2



056.044 (63034)
Orange
Orange



056.040 (64089)
Chilliro
Chilli red



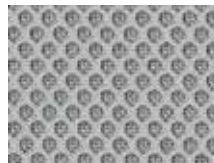
056.120 (66063)
Hellblau
Light blue



056.022 (66064)
Dunkelblau
Deep blue



056.011 (68056)
Hellgrün
Vivid green



056.031 (60011)
Platingrau
Platin



056.035 (60025)
Graphitgrau
Graphite



056.033 (60999)
Schwarz
Midnight black

Sealife : B

Zusammensetzung: 100% Recycling-Polyester
(Seaqual zertifiziert)

Gewicht: ca. 460 g/m²

Breite: ca. 140 cm

Lichtechtheit: Note 6 (DIN EN ISO 105-B02)

Pilling: Note 5 (DIN EN ISO 12945/2)

Reibechtheit: nass: 4 / trocken: 5
(DIN EN ISO 105-X12)

Scheuerfestigkeit: 100.000 Touren (Martindale;
DIN EN ISO 12947-2)

Brandverhalten: DIN EN 1021: Teil 1/2,
UNI 9175 Class 1 IM,
BS 7176 Class Low

Composition: 100% recycled polyester
(SEAQUAL certified)

Weight: approx. 460 g/m²

Width: approx. 140 cm

Light fastness: value 6 (DIN EN ISO 105-BO2)

Pilling: value 5 (DIN EN ISO 12945/2)

Fastness to rubbing: wet: 4 / dry: 5
(DIN EN ISO 105-X12)

Abrasion resistance: 100.000 rubs (Martindale;
DIN EN ISO 12947-2)

Flammability: DIN EN 1021: Part 1/2,
UNI 9175 Class 1 IM,
BS 7176 Class Low



150.004 (3509)
Currygelb
Curry yellow



150.046 (4522)
Pink
Pink orchid



150.047 (4566)
Mandarine
Mandarine



150.042 (4528)
Rubinrot
Rubin red



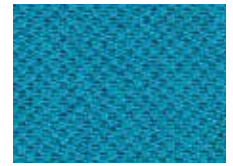
150.025 (6524)
Wasserblau
Lagoon blue



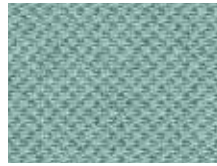
150.020 (6512)
Standardblau
Classic blue



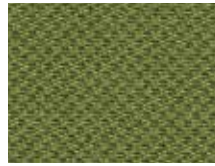
150.022 (6080)
Dunkelblau
Deep blue



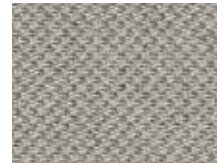
150.023 (6591)
Türkis
Caribbean blue



150.016 (7530)
Wassergrün
Ice green



150.010 (7521)
Grün
Organic green



150.095 (1506)
Grau/Beige
Metal grey/Beige



150.030 (8532)
Grau
Metal grey



150.036 (8517)
Anthrazitgrau
Asphalt grey



150.033 (8033)
Schwarz
Midnight black

Select : B

Zusammensetzung: 85% New Zealand Wolle,
15% Polyamid

Gewicht: ca. 510 g/m²

Breite: ca. 140 cm

Lichtechtheit: Note 5–8 (DIN EN ISO 105-B02)

Pilling: Note 4 (DIN EN ISO 12945/2)

Reibechtheit: nass: 4–5 / trocken: 4–5
(DIN EN ISO 105-X12)

Scheuerfestigkeit: 200.000 Touren (Martindale;
DIN EN ISO 12947-2)

Brandverhalten: BS EN 1021-1 Cigarette,
BS EN 1021-2 Match,
BS 5852 Part 1 0,1 Cigarette &
Match, The Furniture and
Furnishing Regulations 1988,
BS 5852 Crib 5, IMO MSC
307(88) Annex 1 part 8,
MED Certificate IMO, IMO MSC
307(88) Annex 1 part 8 UK,
MED Certificate IMO UK,
CA TB 117-2013

Composition: 85% New Zealand-wool,
15% polyamide

Weight: approx. 510 g/m²

Width: approx. 140 cm

Light fastness: value 5–8 (DIN EN ISO 105-BO2)

Pilling: value 4 (DIN EN ISO 12945/2)

Fastness to rubbing: wet: 4–5 / dry: 4–5
(DIN EN ISO 105-X12)

Abrasion resistance: 200.000 rubs (Martindale;
DIN EN ISO 12947-2)

Flammability: BS EN 1021-1 Cigarette,
BS EN 1021-2 Match,
BS 5852 Part 1 0,1 Cigarette &
Match, The Furniture and
Furnishing Regulations 1988, BS
5852 Crib 5, IMO MSC 307(88)
Annex 1 part 8, MED Certificate
IMO, IMO MSC 307(88) Annex 1
part 8 UK, MED Certificate IMO
UK, CA TB 117-2013



184.053 (60005)
Sand
Sand



184.050 (61184)
Cappuccino
Cappuccino



184.052 (61189)
Fango
Fango



184.004 (62098)
Currygelb
Curry yellow



184.046 (65117)
Pink
Pink orchid



184.040 (64216)
Chillrot
Chilli red



184.010 (68210)
Grün
Organic green



184.016 (67101)
Wassergrün
Ice green



184.025 (66191)
Wasserblau
Lagoon blue



184.018 (67099)
Opalgrün
Opal green



184.022 (66144)
Dunkelblau
Deep blue



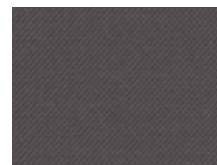
184.024 (61190)
Lila
Lila



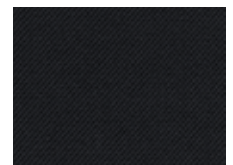
184.032 (60132)
Steingrau
Stone grey



184.030 (60003)
Grau
Metal grey



184.039 (60134)
Javagrau
Java grey



184.033 (60999)
Schwarz
Midnight black

Step : B

Zusammensetzung: 100% Trevira CS® (Polyester)
Gewicht: ca. 470 g/m²
Breite: ca. 140 cm
Lichtechtheit: Note 5–7 (DIN EN ISO 105-B02)
Pilling: Note 4–5 (DIN EN ISO 12945/2)
Reibechtheit: nass: 4–5 / trocken: 4–5 (DIN EN ISO 105-X12)
Scheuerfestigkeit: 100.000 Touren (Martindale; DIN EN ISO 12947-2)
Brandverhalten: IMO MSC 307(88) Annex 1 part 8, MED Certificate IMO, DIN 4102 B1, NF-P 92-503/504/505 class M1, DIN EN 1021: Teil 1/2, BS 5852 Part 1 0,1, BS 5852 Crib 5, ÖNORM B 3825-B1-3800-Q1 UK, BS 7176 Medium hazard, AM 18 - NF D 60-013, US CA TB 117-2013, Class Uno UNI 9175 Class 1 I EMME, DIN EN 13501-1 B-s1,d0

Composition: 100% Trevira CS® (polyester)
Weight: approx. 470 g/m²
Width: approx. 140 cm
Light fastness: value 5–7 (DIN EN ISO 105-B02)
Pilling: value 4–5 (DIN EN ISO 12945/2)
Fastness to rubbing: wet: 4–5 / dry: 4–5 (DIN EN ISO 105-X12)
Abrasion resistance: 100.000 rubs (Martindale; DIN EN ISO 12947-2)
Flammability: IMO MSC 307(88) Annex 1 part 8, MED Certificate IMO, DIN 4102 B1, NF-P 92-503/504/505 class M1, DIN EN 1021: Part 1/2, BS 5852 Part 1 0,1, BS 5852 Crib 5, ÖNORM B 3825-B1-3800-Q1 UK, BS 7176 Medium hazard, AM 18 - NF D 60-013, US CA TB 117-2013, Class Uno UNI 9175 Class 1 I EMME, DIN EN 13501-1 B-s1,d0



046.004 (62057)
Currygelb
Curry yellow



046.041 (64180)
Feuerrot
Züco red



046.059 (63012)
Rostbraun
Rust



046.120 (66018)
Hellblau
Light blue



046.121 (66152)
Stahlblau
Steel blue



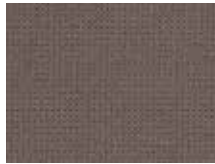
046.022 (65011)
Dunkelblau
Deep blue



046.011 (68119)
Hellgrün
Vivid green



046.010 (68162)
Grün
Organic green



046.052 (60090)
Fango
Fango



046.030 (60011)
Grau
Metal grey



046.036 (60021)
Anthrazitgrau
Asphalt grey



046.033 (60999)
Schwarz
Midnight black

Step Melange : B

Zusammensetzung: 100% Trevira CS® (Polyester)
Gewicht: ca. 470 g/m²
Breite: ca. 140 cm
Lichtechtheit: Note 5–7 (DIN EN ISO 105-B02)
Pilling: Note 4–5 (DIN EN ISO 12945/2)
Reibechtheit: nass: 4–5 / trocken: 4–5 (DIN EN ISO 105-X12)
Scheuerfestigkeit: 100.000 Touren (Martindale; DIN EN ISO 12947-2)
Brandverhalten: IMO MSC 307(88) Annex 1 part 8, MED Certificate IMO, DIN 4102 B1, NF-P 92-503/504/505 class M1, DIN EN 1021: Teil 1/2, BS 5852 Part 1 0,1, BS 5852 Crib 5, ÖNORM B 3825-B1-3800-Q1 UK, BS 7176 Medium hazard, AM 18 - NF D 60-013, US CA TB 117-2013, Class Uno UNI 9175 Class 1 I EMME, DIN EN 13501-1 B-s1,d0

Composition: 100% Trevira CS® (polyester)
Weight: approx. 470 g/m²
Width: approx. 140 cm
Light fastness: value 5–7 (DIN EN ISO 105-B02)
Pilling: value 4–5 (DIN EN ISO 12945/2)
Fastness to rubbing: wet: 4–5 / dry: 4–5 (DIN EN ISO 105-X12)
Abrasion resistance: 100.000 rubs (Martindale; DIN EN ISO 12947-2)
Flammability: IMO MSC 307(88) Annex 1 part 8, MED Certificate IMO, DIN 4102 B1, NF-P 92-503/504/505 class M1, DIN EN 1021: Part 1/2, BS 5852 Part 1 0,1, BS 5852 Crib 5, ÖNORM B 3825-B1-3800-Q1 UK, BS 7176 Medium hazard, AM 18 - NF D 60-013, US CA TB 117-2013, Class Uno UNI 9175 Class 1 I EMME, DIN EN 13501-1 B-s1,d0



047.004 (62057)
Currygelb
Curry yellow



047.043 (64179)
Samtrot
Red velvet



047.025 (66018)
Wasserblau
Lagoon blue



047.121 (66152)
Stahlblau
Steel blue



047.022 (66149)
Dunkelblau
Deep blue



047.011 (62073)
Hellgrün
Vivid green



047.013 (68163)
Olivgrün
Olive green



047.010 (68162)
Grün
Organic green



047.015 (68158)
Waldgrün
Green



047.030 (60004)
Grau
Metal grey



047.037 (61149)
Vulkangrau
Vulcan grey



047.036 (60090)
Anthrazitgrau
Asphalt grey

Ultra : B

Zusammensetzung: 72% Cradura (PA), 16% certified virgin wool, 12% redesigned Lenzing FR
Gewicht: ca. 437 g/m²
Breite: ca. 140 cm
Lichtechtheit: Note 6–7 (DIN EN ISO 105-B02)
Pilling: Note 4 (DIN EN ISO 12945/2)
Reibechtheit: nass: 4–5 / trocken: 4–5 (DIN EN ISO 105-X12)
Scheuerfestigkeit: 500.000 Touren (Martindale; DIN EN ISO 12947-2)
Brandverhalten: DIN EN 1021-1/2, BS 5852-0/1, California TB 117
Composition: 72% Cradura™, PA, 16% certified virgin wool, WV, 12% redesigned Lenzing FR™
Weight: approx. 437 g/m²
Width: approx. 140 cm
Light fastness: value 6–7 (DIN EN ISO 105-BO2)
Pilling: value 4 (DIN EN ISO 12945/2)
Fastness to rubbing: wet: 4–5 / dry: 4–5 (DIN EN ISO 105-X12)
Abrasion resistance: 500.000 rubs (Martindale; DIN EN ISO 12947-2)
Flammability: DIN EN 1021-1/2, BS 5852-0/1, California TB 117



153.019 (CX1050-051)
Indigoblau
Indigo blue



153.022 (CX1050-054)
Dunkelblau
Deep blue



153.110 (CX1050-081)
Dunkelgrün
Dark green



153.035 (CX1050-093)
Graphitgrau
Graphite



153.038 (CX1050-096)
Lavagrau
Lava grey



153.033 (CX1050-099)
Schwarz
Midnight black

Xtreme : B

Zusammensetzung: 100 % recyceltes Polyester
Gewicht: ca. 310 g/m²
Breite: ca. 140 cm
Lichtechtheit: Note 6 (DIN EN ISO 105-B02)
Pilling: Note 5 (DIN EN ISO 12945/2)
Reibechtheit: nass: 4 / trocken: 4 (DIN EN ISO 105-X12)
Scheuerfestigkeit: 100.000 Touren (Martindale; DIN EN ISO 12947)
Brandverhalten: DIN EN 1021: Teil 1/2, DIN 4102 B1, BS 7176 Medium Hazard, UNI 9175 Class 1 IM
Composition: 100 % recycled polyester
Weight: approx. 310 g/m²
Width: approx. 140 cm
Light fastness: value 6 (DIN EN ISO 105-BO2)
Pilling: value 5 (DIN EN ISO 12945/2)
Fastness to rubbing: wet: 4 / dry: 4 (DIN EN ISO 105-X12)
Abrasion resistance: 100.000 rubs (Martindale; DIN EN ISO 12947)
Flammability: DIN EN 1021: Part 1/2, DIN 4102 B1, BS 7176 Medium Hazard, UNI 9175 Class 1 IM



005.040 (YS079)
Chilliroot
Chilli red



005.049 (YS084)
Aubergine
Aubergine



005.027 (YS082)
Königsblau
Royal blue



005.022 (YS005)
Dunkelblau
Deep blue



005.028 (YS026)
Marineblau
Navy blue



005.029 (YS100)
Nachtblau
Midnight blue



005.015 (YS047)
Waldgrün
Emerald green



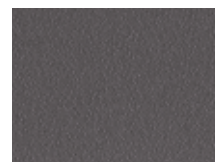
005.031 (YS094)
Platingrau
Platin



005.032 (YS141)
Steingrau
Stone grey



005.034 (YS046)
Dunkelgrau
Oxid grey



005.037 (YS081)
Vulkangrau
Vulcan grey



005.033 (YS009)
Schwarz
Midnight black

Avalon : C

Zusammensetzung: 100% Reine Schurwolle
 Gewicht: ca. 580 g/m
 Breite: 150 cm
 Lichtechtheit: Note 6 (DIN EN ISO 105-B02)
 Scheuerfestigkeit: 35.000 Touren (Martindale;
 DIN EN ISO 12947-2)
 Brandverhalten: DIN EN 1021: Teil 1/2

Composition: 100% Pure New Wool
 Weight: approx. 580 g/m
 Width: 150 cm
 Light fastness: value 6 (DIN EN ISO 105-BO2)
 Abrasion resistance: 35.000 rubs (Martindale;
 DIN EN ISO 12947-2)
 Flammability: DIN EN 1021: Part 1/2



166.040 (367M/M015858)
 Chilliroth
 Chili red



166.121 (104)
 Stahlblau
 Steel blue



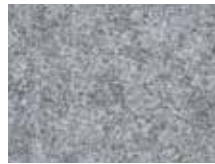
166.025 (M/02863)
 Wasserblau
 Lagoon blue



166.019 (M/021443)
 Indigoblau
 Indigo blue



166.010 (M/04019)
 Grün
 Organic green



166.030 (367/M6)
 Grau
 Metal grey



166.036 (367/M81)
 Anthrazitgrau
 Asphalt grey



166.053 (367/M8020)
 Sand
 Sand



166.110 (449)
 Dunkelgrün
 Dark green

Blazer : C

Zusammensetzung: 100% Reine Schurwolle
 Gewicht: ca. 460 g/m
 Breite: ca. 140 cm
 Lichtechtheit: Note 5 (DIN EN ISO 105-B02)
 Reibechtheit: nass: 4 / trocken: 4
 (DIN EN ISO 105-X12)
 Scheuerfestigkeit: 50.000 Touren (Martindale;
 DIN EN ISO 12947-2)
 Brandverhalten: DIN EN 1021: Teil 1/2,
 BS 7176 Low Hazard;
 NF D 60-013

Composition: 100% Pure new wool
 Weight: approx. 460 g/m
 Width: approx. 140 cm
 Light fastness: value 5 (DIN EN ISO 105-BO2)
 Fastness to rubbing: wet: 4 / dry: 4
 (DIN EN ISO 105-X12)
 Abrasion resistance: 50.000 rubs (Martindale;
 DIN EN ISO 12947-2)
 Flammability: DIN EN 1021: Part 1/2,
 BS 7176 Low Hazard;
 NF D 60-013



171.004 (CUZ58)
 Currygelb
 Curry yellow



171.044 (CUZ39)
 Orange
 Orange



171.045 (CUZ90)
 Kupferrot
 Pure Copper



171.023 (CUZ1R)
 Türkis
 Caribbean blue



171.025 (CUZ1W)
 Wasserblau
 Lagoon blue



171.013 (CUZ1F)
 Olivgrün
 Olive green



171.053 (CUZ2Q)
 Sand
 Sand



171.050 (CUZ86)
 Cappuccino
 Cappuccino



171.051 (CUZ31)
 Hellbraun
 Light brown



171.031 (CUZ28)
 Platingrau
 Platin



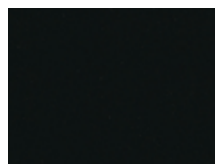
171.030 (CUZ1E)
 Grau
 Metal grey



171.036 (CUZ30)
 Anthrazitgrau
 Asphalt grey



171.110 (CUZ35)
 Dunkelgrün
 Dark green



171.033 (CUZ08)
 Schwarz
 Midnight black

Fenice : C

Zusammensetzung: 75% Wolle, 25% Polyamid
Gewicht: ca. 500 g/m
Breite: ca. 150 cm
Lichtechtheit: Note 6 (UNI EN ISO 105-B02)
Pilling: Note 4 (DIN EN ISO 12945/2)
Reibechtheit: nass: 5 / trocken: 4 (DIN EN ISO 105-X12)
Scheuerfestigkeit: 100.000 Touren (Martindale; UNI EN ISO 12947:2000)
Brandverhalten: DIN EN 1021: Teil 1/2, BS 5852, Crib 5, US CA TB 117-2013, Italia - CLASSE 1 IM
Composition: 75% Wool, 25% Polyamide
Weight: approx. 500 g/m
Width: approx. 150 cm
Light fastness: value 6 (UNI EN ISO 105-B02)
Pilling: value 4 (DIN EN ISO 12945/2)
Fastness to rubbing: wet: 5 / dry: 4 (DIN EN ISO 105-X12)
Abrasion resistance: 100.000 rubs (Martindale; UNI EN ISO 12947:2000)
Flammability: DIN EN 1021: Part 1/2, BS 5852, Crib 5, US CA TB 117-2013, Italia - CLASSE 1 IM



163.003 (51)
Honiggelb
Honey yellow



163.004 (52)
Currygelb
Curry yellow



163.044 (102)
Orange
Orange



163.048 (202)
Shirazrot
Shiraz red



163.024 (252)
Lila
Lila



163.025 (351)
Wasserblau
Lagoon blue



163.121 (301)
Stahlblau
Steel blue



163.016 (455)
Wassergrün
Ice green



163.011 (453)
Hellgrün
Vivid green



163.036 (602)
Anthrazitgrau
Asphalt grey

Fenice Stuoia : C

Zusammensetzung: 75% Wolle, 25% Polyamid
Gewicht: ca. 500 g/m
Breite: ca. 150 cm
Lichtechtheit: Note 6 (UNI EN ISO 105-B02)
Pilling: Note 4 (DIN EN ISO 12945/2)
Reibechtheit: nass: 5 / trocken: 4 (DIN EN ISO 105-X12)
Scheuerfestigkeit: 100.000 Touren (Martindale; UNI EN ISO 12947:2000)
Brandverhalten: DIN EN 1021: Teil 1/2, BS 5852, Crib 5, US CA TB 117-2013, Italia - CLASSE 1 IM
Composition: 75% Wool, 25% Polyamide
Weight: approx. 500 g/m
Width: approx. 150 cm
Light fastness: value 6 (UNI EN ISO 105-B02)
Pilling: value 4 (DIN EN ISO 12945/2)
Fastness to rubbing: wet: 5 / dry: 4 (DIN EN ISO 105-X12)
Abrasion resistance: 100.000 rubs (Martindale; UNI EN ISO 12947:2000)
Flammability: DIN EN 1021: Part 1/2, BS 5852, Crib 5, US CA TB 117-2013, Italia - CLASSE 1 IM



164.044 (2053)
Orange
Orange



164.048 (2204)
Shirazrot
Shiraz red



164.024 (2253)
Lila
Lila



164.025 (2353)
Wasserblau
Lagoon blue



164.121 (2304)
Stahlblau
Steel blue



164.011 (2457)
Hellgrün
Vivid green

Grain Uni : C

Zusammensetzung: 92% recyceltes Polyester,
8% Polyester

Gewicht: ca. 615 g/m

Breite: ca. 140 cm

Lichtechtheit: Note 5-7 (UNI EN ISO 105-B02)

Pilling: Note 5 (DIN EN ISO 12945/2)

Reibechtheit: nass: 4-5 / trocken: 4-5
(DIN EN ISO 105-X12)

Scheuerfestigkeit: 100.000 Touren (Martindale;
DIN EN ISO 12947-2)

Brandverhalten: BS EN 1021 1&2
Cigarette and Match;
CA TB 117-2013

Composition: 92% recycled polyester,
8% Polyester

Weight: approx. 615 g/m

Width: approx. 140 cm

Light fastness: value 5-7 (UNI EN ISO 105-B02)

Pilling: value 5 (DIN EN ISO 12945/2)

Fastness to rubbing: wet: 4-5 / dry: 4-5
(DIN EN ISO 105-X12)

Abrasion resistance: 100.000 rubs (Martindale;
DIN EN ISO 12947-2)

Flammability: BS EN 1021 1&2
Cigarette and Match;
CA TB 117-2013



182.053 (61252)
Sand
Sand



182.068 (61037)
Olivbraun
Black olive



182.052 (61230)
Fango
Fango



182.063 (61146)
Torfbraun
Torf



182.004 (62122)
Currygelb
Curry yellow



182.045 (63117)
Kupferrot
Pure Copper



182.121 (66236)
Stahlblau
Steel blue



182.022 (66232)
Dunkelblau
Deep blue



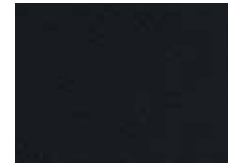
182.110 (68155)
Dunkelgrün
Dark green



182.031 (60300)
Platingrau
Platin



182.035 (60303)
Graphitgrau
Graphite



182.033 (60999)
Schwarz
Midnight black

Grain Melange : C

Zusammensetzung: 80% recyceltes Polyester,
20% Polyester

Gewicht: ca. 615 g/m

Breite: ca. 140 cm

Lichtechtheit: Note 5-7 (UNI EN ISO 105-B02)

Pilling: Note 5 (DIN EN ISO 12945/2)

Reibechtheit: nass: 4-5 / trocken: 4-5
(DIN EN ISO 105-X12)

Scheuerfestigkeit: 100.000 Touren (Martindale;
DIN EN ISO 12947-2)

Brandverhalten: BS EN 1021 1&2
Cigarette and Match;
CA TB 117-2013

Composition: 80% recycled polyester,
20% Polyester

Weight: approx. 615 g/m

Width: approx. 140 cm

Light fastness: value 5-7 (UNI EN ISO 105-B02)

Pilling: value 5 (DIN EN ISO 12945/2)

Fastness to rubbing: wet: 4-5 / dry: 4-5
(DIN EN ISO 105-X12)

Abrasion resistance: 100.000 rubs (Martindale;
DIN EN ISO 12947-2)

Flammability: BS EN 1021 1&2
Cigarette and Match;
CA TB 117-2013



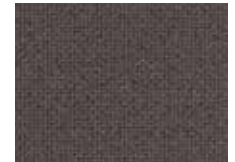
183.053 (61251)
Sand
Sand



183.068 (61255)
Olivbraun
Black olive



183.052 (61248)
Fango
Fango



183.063 (61249)
Torfbraun
Torf



183.004 (62123)
Currygelb
Curry yellow



183.045 (63118)
Kupferrot
Pure Copper



183.121 (66237)
Stahlblau
Steel blue



183.022 (66233)
Dunkelblau
Deep blue



183.110 (68260)
Dunkelgrün
Dark green



183.031 (60320)
Platingrau
Platin



183.035 (60323)
Graphitgrau
Graphite



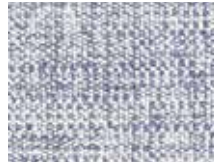
183.033 (60328)
Schwarz
Midnight black

Maple : C

Zusammensetzung: 81% Viscose, 15% Leinen, 4% Polyester
Gewicht: ca. 910 g/m
Breite: ca. 140 cm
Lichtechtheit: Note 5 (UNI EN ISO 105-B02)
Pilling: Note 4-5 (DIN EN ISO 12945/2)
Reibechtheit: nass: 4-5 / trocken: 4-5 (DIN EN ISO 105-X12)
Scheuerfestigkeit: 30.000 Touren (Martindale; DIN EN ISO 12947-2)
Brandverhalten: DIN EN 1021: Teil 1/2
Composition: 81% Viscose, 15% Linen, 4% Polyester
Weight: approx. 910 g/m
Width: approx. 140 cm
Light fastness: value 5 (UNI EN ISO 105-BO2)
Pilling: value 4-5 (DIN EN ISO 12945/2)
Fastness to rubbing: wet: 4-5 / dry: 4-5 (DIN EN ISO 105-X12)
Abrasion resistance: 30.000 rubs (Martindale; DIN EN ISO 12947-2)
Flammability: DIN EN 1021: Part 1/2



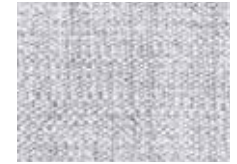
014.043 (562)
Samtrot
 Red velvet



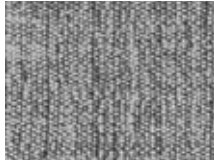
014.025 (742)
Wasserblau
 Lagoon blue



014.022 (792)
Dunkelblau
 Deep blue



014.031 (722)
Platingrau
 Platin



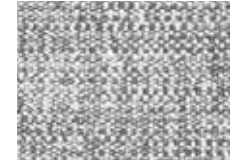
014.037 (162)
Vulkangrau
 Vulcan grey



014.050 (222)
Cappuccino
 Cappuccino



014.052 (232)
Fango
 Fango



014.069 (142)
Terrabraun
 Terra brown

Remix : C

Zusammensetzung: 90% Schurwolle, 10% Nylon
Gewicht: ca. 420 g/m
Breite: ca. 140 cm
Lichtechtheit: Note 6 (UNI EN ISO 105-B02)
Pilling: Note 4 (DIN EN ISO 12945/2)
Scheuerfestigkeit: 100.000 Touren (Martindale; DIN EN ISO 12947-2)
Brandverhalten: DIN EN 1021: Teil 1/2, BS 5852 part 1, UNI 9175 Class 1 IM
Composition: 90% New wool, 10% Nylon
Weight: approx. 420 g/m
Width: approx. 140 cm
Light fastness: value 6 (UNI EN ISO 105-BO2)
Pilling: value 4 (DIN EN ISO 12945/2)
Abrasion resistance: 100.000 rubs (Martindale; DIN EN ISO 12947-2)
Flammability: DIN EN 1021: Part 1/2, BS 5852 part 1, UNI 9175 Class 1 IM



073.017 (873)
Schwarzgrün
 Jasper green



073.050 (233)
Cappuccino
 Cappuccino



073.043 (653)
Samtrot
 Red velvet



073.025 (743)
Wasserblau
 Lagoon blue



073.022 (773)
Dunkelblau
 Deep blue



073.037 (143)
Vulkangrau
 Vulcan grey



073.039 (173)
Javagrau
 Java grey



073.038 (393)
Lavagrau
 Lava grey

Savak : D

Zusammensetzung: 80% New Zealand Wolle,
20% Baumwolle

Gewicht: ca. 780 g/m

Breite: ca. 140 cm

Lichtechtheit: Note 5–7 (DIN EN ISO 105-B02)

Pilling: Note 3–4 (DIN EN ISO 12945/2)

Reibechtheit: nass: 4 / trocken: 4–5
(DIN EN ISO 105-X12)

Scheuerfestigkeit: 50.000 Touren (Martindale;
DIN EN ISO 12947-2)

Brandverhalten: BS EN 1021 1&2
Cigarette and Match

Composition: 80% New Zealand-wool,
20% Cotton

Weight: approx. 780 g/m

Width: approx. 140 cm

Light fastness: value 5–7 (UNI EN ISO 105-B02)

Pilling: value 3–4 (DIN EN ISO 12945/2)

Fastness to rubbing: wet: 4 / dry: 4–5
(DIN EN ISO 105-X12)

Abrasion resistance: 50.000 rubs (Martindale;
DIN EN ISO 12947-2)

Flammability: BS EN 1021 1&2
Cigarette and Match



197.077 (31005)
Braun und Weiß
Brown and white



197.078 (41005)
Grau und Weiß
Metal grey and white



197.079 (51005)
Schwarz und Weiß
Black and white

Divina : D

Zusammensetzung: 100% Schurwolle, Kammgarn

Gewicht: ca. 820 g/m²

Breite: ca. 150 cm

Lichtechtheit: Note 5 (DIN EN ISO 105-B02)

Pilling: Note 3 (DIN EN ISO 12945/2)

Scheuerfestigkeit: 45.000 Touren (Martindale;
DIN EN ISO 12947-2)

Brandverhalten: DIN EN 1021: Teil 1,
DIN 4102-1

Composition: 100% New wool, worsted

Weight: approx. 820 g/m²

Width: approx. 150 cm

Light fastness: value 5 (DIN EN ISO 105-B02)

Pilling: value 3 (DIN EN ISO 12945/2)

Abrasion resistance: 45.000 rubs (Martindale;
DIN EN ISO 12947-2)

Flammability: DIN EN 1021: Part 1,
DIN 4102-1



032.046 (0613)
Pink
Pink orchid



032.044 (0433)
Orange
Orange



032.043 (0584)
Samtrot
Red velvet



032.019 (0731)
Indigo Blau
Indigo blue



032.025 (0743)
Wasserblau
Lagoon blue



032.022 (0791)
Dunkelblau
Deep blue



032.023 (0813)
Türkis
Caribbean blue



032.010 (0913)
Grün
Organic green



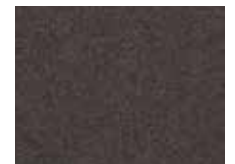
032.031 (0713)
Platingrau
Platin



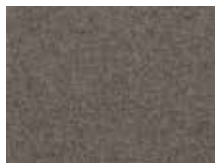
032.050 (0227)
Cappuccino
Cappuccino



032.053 (0224)
Sand
Sand



032.052 (0353)
Fango
Fango



032.062 (0343)
Pfefferbraun
Brown Pepper



032.069 (0260)
Terrabraun
Terra



032.036 (0170)
Anthrazitgrau
Asphaltgrey



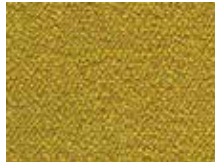
032.033 (0180)
Schwarz
Midnight black



Sera : D

Zusammensetzung: 94% Schurwolle, 6% Polyamid
Gewicht: ca. 910 g/m²
Breite: ca. 140 cm
Lichtechtheit: Note 5 (DIN EN ISO 105-B02)
Pilling: Note 4–5 (DIN EN ISO 12945/2)
Scheuerfestigkeit: 122.000 Touren (Martindale; DIN EN ISO 12947-2)
Brandverhalten: DIN 4102-2, FAR 25.853, EN 13501-1

Composition: 94% New wool, 6% Polyamide
Weight: approx. 910 g/m²
Width: approx. 140 cm
Light fastness: value 5 (DIN EN ISO 105-B02)
Pilling: value 4–5 (DIN EN ISO 12945/2)
Abrasion resistance: 122.000 rubs (Martindale; DIN EN ISO 12947-2)
Flammability: DIN 4102-2, FAR 25.853, EN 13501-1



033.011 (tivoli)
 Hellgrün
 Vivid green



033.047 (glow)
 Mandarine
 Mandarine



033.046 (lotus)
 Pink
 Pink orchid



033.023 (mirage)
 Türkis
 Caribbean blue



033.020 (mare)
 Standardblau
 Classic blue



033.029 (amur)
 Nachtblau
 Midnight blue



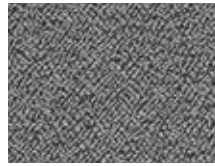
033.053 (almond)
 Sand
 Sand



033.062 (walnut)
 Pfefferbraun
 Brown pepper



033.060 (rosewood)
 Schokobraun
 Chocolate



033.030 (carbon)
 Grau
 Metal grey



033.035 (graphit)
 Graphitgrau
 Graphite



033.033 (ebony)
 Schwarz
 Midnight black

Steelcut 3 : D

Zusammensetzung: 90% Schurwolle, Kammgarn, 10% Nylon
Gewicht: ca. 825 g/m²
Breite: ca. 140 cm
Lichtechtheit: Note 5–6 (DIN EN ISO 105-B02)
Pilling: Note 3–4 (DIN EN ISO 12945/2)
Reibechtheit: nass: 3–5 / trocken: 4–5 (DIN EN ISO 105-X12)
Scheuerfestigkeit: 100.000 Touren (Martindale; DIN EN ISO 12947-2)
Brandverhalten: AS/NZS 1530.3, AS/NZS 3837 class

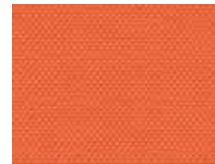
Composition: 90% New wool, worsted, 10% Nylon
Weight: approx. 825 g/m²
Width: approx. 140 cm
Light fastness: value 5–6 (DIN EN ISO 105-B02)
Pilling: value 3–4 (DIN EN ISO 12945/2)
Fastness to rubbing: wet: 3–4 / dry: 4–5 (DIN EN ISO 105-X12)
Abrasion resistance: 100.000 rubs (Martindale; DIN EN ISO 12947-2)
Flammability: AS/NZS 1530.3, AS/NZS 3837 class



198.073 (0110)
 Reinweiß
 Pure white



198.053 (0240)
 Sand
 Sand



198.047 (0522)
 Mandarine
 Mandarine



198.120 (0732)
 Hellblau
 Light blue



198.024 (0652)
 Lila
 Lila



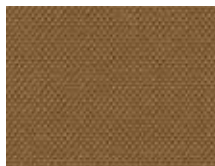
198.022 (0775)
 Dunkelblau
 Deep blue



198.111 (0922)
 Blassgrün
 Pale green



198.014 (0780)
 Petrolgrün
 Jade green



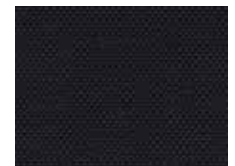
198.051 (0265)
 Hellbraun
 Light brown



198.031 (0120)
 Platingrau
 Platin



198.032 (0155)
 Steingrau
 Stone grey



198.033 (0190)
 Schwarz
 Midnight black

Steelcut Quartet : D

Zusammensetzung: 90% Schurwolle, Kammgarn,
10% Nylon

Gewicht: ca. 770 g/m

Breite: ca. 140 cm

Lichtechtheit: Note 6–7 (DIN EN ISO 105-B02)

Pilling: Note 4–5 (DIN EN ISO 12945/2)

Reibechtheit: nass: 4–5 / trocken: 4–5
(DIN EN ISO 105-X12)

Scheuerfestigkeit: 100.000 Touren (Martindale;
DIN EN ISO 12947-2)

Brandverhalten: AS/NZS 1530.3,
AS/NZS 3837 class

Composition: 90% New wool, worsted,
10% Nylon

Weight: approx. 770 g/m

Width: approx. 140 cm

Light fastness: value 6–7 (DIN EN ISO 105-B02)

Pilling: value 4–5 (DIN EN ISO 12945/2)

Fastness to rubbing: wet: 4–5 / dry: 4–5
(DIN EN ISO 105-X12)

Abrasion resistance: 100.000 rubs (Martindale;
DIN EN ISO 12947-2)

Flammability: AS/NZS 1530.3,
AS/NZS 3837 class



199.096 (0434)
Currygelb/Beige
Curry yellow/Beige



199.094 (0414)
Beige/Orange
Beige/ Orange



199.084 (0544)
Ameisenrot/Blau
Ant red/Blue



199.083 (0554)
Weinrot/Gelb
Wine red/Yellow



199.097 (0644)
Lila/Beige
Lila/Beige



199.080 (0224)
Stahlblau/Braun
Steel blue/Brown



199.081 (0654)
Dunkelblau/Braun
Deep blue/Brown



199.082 (0924)
Grün/Gelb
Organic green/Yellow

Leder/ Leather : E

**Anilingefärbtes leicht mit Pigmentfarbe abgedecktes
Rindsobleider, sehr strapazierfähig, vollnarbig.**

Nappaleder pigmentiert (Semi-Anilinleder)

Lichtechtheit: Note 3 (DIN EN ISO 105-B02)

Reibechtheit: nass: 4–5 / trocken: 4–5
(DIN EN ISO 11640)

Brandverhalten: DIN EN 1021: Teil 1/2

Aniline dyed cowhide leather with light pigment
dyeing, very hard wearing, full-grain.

Pigmented Nappa leather (semi-aniline leather)

Licht fastness: value 3 (DIN EN ISO 105-B02)

Fastness to rubbing: wet: 4–5 / dry: 4–5
(DIN EN ISO 11640)

Flammability: DIN EN 1021: Part 1/2



001.052 (Atlantic torf)
Fango
Fango



001.069 (Atlantic tabak)
Terrabraun
Terra brown



001.035 (Atlantic graphit)
Graphitgrau
Graphite



001.072 (Atlantic kiesel)
Kaschmirweiß
Cashmere



001.070 (Atlantic weiss)
Polarweiß
Arctic white



001.033 (Atlantic schwarz)
Schwarz
Midnight black

Premium-Leder : **F**
 Premium leather : **F**

Feinstes, naturbelassenes Nappaleder.

Anilinfärbtes Rindsobleder der Spitzenklasse. Mit natürlichen Ölen behandelt, tuchweicher Griff, atmungsaktiv, hautsympathisch, feuchtigkeitsregulierend.

Wasserlösliche Farben ohne chemische Lösungsmittel.

Premium Echt-Leder

Lichtechtheit: Note 4 (DIN EN ISO 105-B02)

Reibechtheit: nass: 4 / trocken: 3 – 4 (DIN EN ISO 11640)

Brandverhalten: DIN EN 1021: Teil 1/2, DIN 75200

The finest natural Nappa leather top quality.

Aniline dyed cowhide leather. Treated with natural oils, fabric-soft touch, breathable, dermatologically safe, moisture control.

Water-soluble dyes without solvents.

Premium leather

Light fastness: value 4 (DIN EN ISO 105-B02)

Fastness to rubbing: wet: 4 / dry: 3 – 4 (DIN EN ISO 11640)

Flammability: DIN EN 1021: Part 1/2, DIN 75200



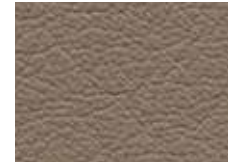
029.041 (34910-F03)
 Feuerrot
 Züco red



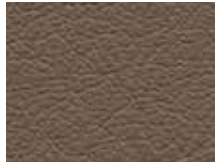
029.048 (34910-S08)
 Shirazrot
 Shiraz red



029.053 (34910-GEO)
 Sand
 Sand



029.050 (34910-G03)
 Cappuccino
 Cappuccino



029.052 (34910-B16)
 Fango
 Fango



029.064 (34910-B13)
 Tabakbraun
 Brown



029.062 (34910-GEP)
 Pfefferbraun
 Brown pepper



029.061 (34910-G01)
 Dunkelbraun
 Walnut



029.027 (34910-S18)
 Königsblau
 Royal blue



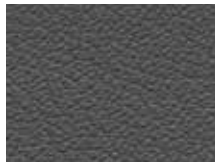
029.031 (34910-S05)
 Platingrau
 Grey



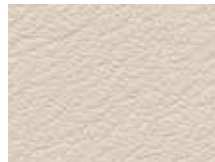
029.032 (34910-E08)
 Steingrau
 Stone grey



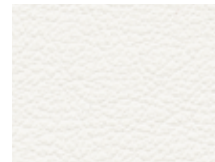
029.035 (34910-A02)
 Graphitgrau
 Graphite



029.036 (34910-EG2)
 Anthrazitgrau
 Asphalt grey



029.072 (34910-G16)
 Kaschmirweiß
 Cashmere



029.073 (34910-P07)
 Reinweiß
 Pure white



029.033 (34910-T01)
 Schwarz
 Midnight black

Web A : Trampoline

Preisgruppe je nach Sitzpolsterung

Zusammensetzung: 100 % Polyester
 Gewicht: ca. 510 g/m
 Scheuerfestigkeit: 100.000 Touren (Martindale;
 DIN EN ISO 12947-2)
 Netzgewebe Web A für Rückenlehnen dat-o und sim-o

Price depending on upholstery of the seat
 Composition: 100% Polyester
 Weight: approx. 510 g/m
 Abrasion resistance: 100.000 rubs (Martindale;
 DIN EN ISO 12947-2)
 Mesh fabric Web A for backrests dat-o and sim-o



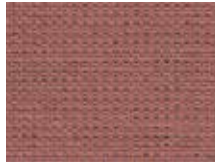
050.033 (NP001)
 Schwarz
 Midnight black

Web B : Tale

Preisgruppe je nach Sitzpolsterung

Zusammensetzung: 100 % Recyceltes Polyester
 Gewicht: ca. 365 g/m
 Breite: ca. 140 cm
 Lichtechtheit: Note 6–8 (DIN EN ISO 105-B02)
 Pilling: Note 5 (DIN EN ISO 12945/2)
 Reibechtheit: nass: 4–5 / trocken: 4–5
 (DIN EN ISO 105-X12)
 Scheuerfestigkeit: 100.000 Touren (Martindale;
 DIN EN ISO 12947-2)
 Brandverhalten: DIN EN 1021: Teil 1/2
 Netzgewebe Web B nur für Rückenlehnen
 @Just mesh, Shape mesh, Stilo mesh, Stilo ES mesh,
 Indeed mesh und Cay mesh

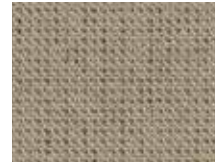
Price depending on upholstery of the seat
 Composition: 100% recycled polyester
 Weight: approx. 365 g/m
 Width: approx. 140 cm
 Light fastness: value 6–8 (DIN EN ISO 105-B02)
 Pilling: value 5 (DIN EN ISO 12945/2)
 Fastness to rubbing: wet: 4–5 / dry: 4–5
 (DIN EN ISO 105-X12)
 Abrasion resistance: 100.000 rubs (Martindale;
 DIN EN ISO 12947-2)
 Flammability: DIN EN 1021: Part 1/2
 Mesh fabric Web B only for backrests
 @Just mesh, Shape mesh, Stilo mesh, Stilo ES mesh,
 Indeed mesh and Cay mesh



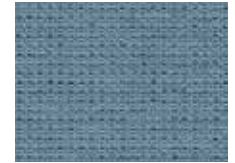
181.046 (64210)
 Pink
 Pink orchid



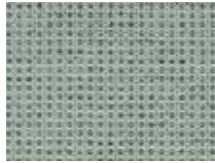
181.042 (64209)
 Rubinrot
 Ruby red



181.050 (61179)
 Cappuccino
 Cappuccino



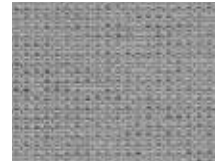
181.025 (66185)
 Wasserblau
 Lagoon blue



181.016 (67089)
 Wassergrün
 Ice green



181.031 (60122)
 Platingrau
 Platin



181.030 (60123)
 Grau
 Metal grey



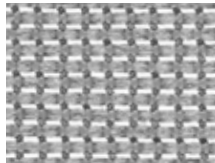
181.033 (60999)
 Schwarz
 Midnight black

Web C : Spin

Preisgruppe je nach Sitzpolsterung

Zusammensetzung: 100% Trevira CS® (Polyester)
 Gewicht: ca. 405 g/m
 Scheuerfestigkeit: 70.000 Touren
 Netzgewebe Web C für Rückenlehnen Cay mesh
 und Indeed mesh

Price depending on upholstery of the seat
 Composition: 100% Trevira CS® (polyester)
 Weight: approx. 405 g/m
 Abrasion resistance: 70.000 rubs
 Mesh fabric Web C for backrests Cay mesh
 and Indeed mesh



179.031 (60004)
 Platingrau
 Platin



179.033 (60999)
 Schwarz
 Midnight black

Web K

Preisgruppe je nach Sitzpolsterung
Zusammensetzung: 100% Polyester
Netzgewebe Web K für Rückenlehnen Lordo

Price depending on upholstery of the seat
Composition: 100% Polyester
Mesh fabric Web K for backrests Lordo



062.030
Grau
Metal grey



062.033
Schwarz
Midnight black

Web L

Preisgruppe je nach Sitzpolsterung
Zusammensetzung: 100% Polyester
Netzgewebe Web L für Rückenlehnen Shape mesh

Price depending on upholstery of the seat
Composition: 100% Polyester
Mesh fabric Web L for backrests Shape mesh



058.033
Schwarz
Midnight black

Web M

Siehe Seite 8
See page 8

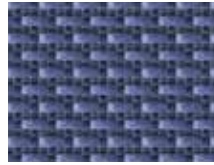
Web P

Preisgruppe je nach Sitzpolsterung
Zusammensetzung: 66% Polyester, 34% Polyamid
Gewicht: ca. 340 g/m
Breite: 140 cm
Lichtechtheit: Note 5–7 (DIN EN ISO 105-B02)
Pilling: Note 3–4 (DIN EN ISO 12945/2)
Reibechtheit: nass: 4–5 / trocken: 4–5
Scheuerfestigkeit: 200.000 Touren (Martindale;
DIN EN ISO 12947-2)
Brandverhalten: DIN EN 1021: Teil 1,
DIN 66084 P-c
Netzgewebe Web P für Rückenlehnen Stilo

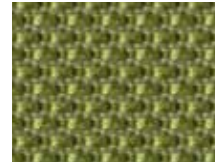
Price depending on upholstery of the seat
Composition: 66% Polyester, 34% Polyamide
Weight: approx. 340 g/m
Width: 140 cm
Light fastness: value 5–7 (DIN EN ISO 105-B02)
Pilling: value 3–4 (DIN EN ISO 12945/2)
Fastness to rubbing: wet: 4–5 / dry: 4–5
Abrasion resistance: 200.000 rubs (Martindale;
DIN EN ISO 12947-2)
Flammability: DIN EN 1021: Part 1,
DIN 66084 P-c
Mesh fabric Web P for backrests Stilo



105.040 (Join 60 Shrinx)
Chilliroot
Chilli red



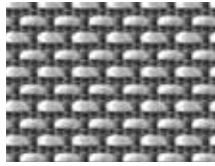
105.020 (Join 71 Shrinx)
Standardblau
Classic blue



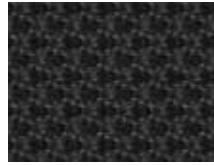
105.010 (Join 90 Shrinx)
Grün
Organic green



105.074 (Join 33 Shrinx)
Weiß
White



105.030 (Join 16 Shrinx)
Grau
Metal grey



105.033 (Join 10 Shrinx)
Schwarz
Midnight black

Web Q

Preisgruppe je nach Sitzpolsterung
Zusammensetzung: 100% Polyester (blickdichter
Textilstrickbezug)
Lichtechtheit: Note 5 (DIN EN ISO 105-B02)
Reibechtheit: nass: 4 / trocken: 4
Scheuerfestigkeit: 40.000 Touren
Netzgewebe Web Q für Rückenlehnen Stilo

Price depending on upholstery of the seat
Composition: 100% Polyester (opaque textile
knitted fabric)
Light fastness: value 5 (DIN EN ISO 105-B02)
Fastness to rubbing: wet: 4 / dry: 4
Abrasion resistance: 40.000 rubs
Mesh fabric Web Q for backrests Stilo



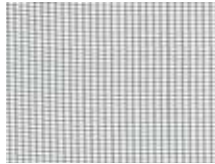
106.033
Schwarz
Midnight black

Web S

Preisgruppe je nach Sitzpolsterung

Zusammensetzung: 100% Polyester
Gewicht: ca. 330 g/m
Scheuerfestigkeit: 70.000 Touren
Netzgewebe Web S für Rückenlehnen dat-o und Stilo mesh

Price depending on upholstery of the seat
Composition: 100% Polyester
Weight: approx. 330 g/m
Abrasion resistance: 70.000 rubs
Mesh fabric Web S for backrests dat-o and Stilo mesh



059.033 (60999)

Schwarz
Midnight black

Web T

Siehe Seite 5
See page 5

Web X

Siehe Seite 6
See page 6

Web Y

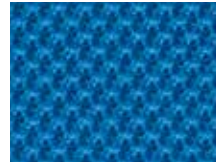
Preisgruppe je nach Sitzpolsterung

Zusammensetzung: 100% Wovenit® 3D
(Polyamidhybrid*)
Gewicht: ca. 290 g/m²
Lichtechtheit: Note 6 (DIN EN ISO 105-B02)
Pilling: Note 5 (DIN EN ISO 12945/2)
Reibechtheit: nass: 5 / trocken: 5
(DIN EN ISO 105-X12)
Scheuerfestigkeit: 100.000 Touren (Martindale)
Brandverhalten: DIN EN 1021: Teil 1/2
Netzgewebe Web Y für Rückenlehnen X-Code mesh

Price depending on upholstery of the seat
Composition: 100% Wovenit® 3D
(polyamide hybrid*)
Weight: approx. 290 g/m²
Light fastness: value 6 (DIN EN ISO 105-B02)
Pilling: value 5 (DIN EN ISO 12945/2)
Fastness to rubbing: wet: 5 / dry: 5
(DIN EN ISO 105-X12)
Abrasion resistance: 100.000 rubs (Martindale)
Flammability: DIN EN 1021: Part 1/2
Mesh fabric Web Y for backrests X-Code mesh



095.044
Orange
Orange



095.019
Indigoblau
Indigo blue



095.035
Graphitgrau
Graphite



095.033
Schwarz
Midnight black

Fiore

Hussen-Farben

Sunbrella®

Zusammensetzung: 97% Sunbrella Acryl
(50% recyceltes Acryl),
3% Polyester

Outdoor-geeignet, schmutz- und wasserabweisend,
waschbar

Cover colours

Sunbrella®

Composition: 97% Sunbrella Acrylic
(50% recycled Acrylic),
3% Polyester

Suitable for outdoor use, dirt and water-repellent,
washable



178.004
Currygelb
Curry yellow



178.045
Kupferrot
Pure Copper



178.019
Indigoblau
Indigo blue



178.016
Wassergrün
Ice green



178.053
Sand
Sand



178.035
Graphitgrau
Graphite

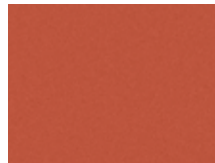
Fiore

Kunststoff-Farben

Plastic colours



KSY
Senfgelb
Mustard yellow
(~ RAL 070 60 60)



KER
Englischrot
English red
(~ RAL 040 50 50)



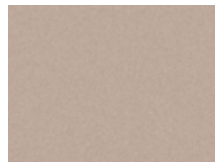
KSB
Sanftblau
Gentle blue
(~ RAL 250 60 15)



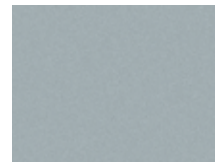
KBB
Berlinerblau
Berlin blue
(~ RAL 260 30 15)



KOG
Altgrün
Old green
(~ RAL 130 60 20)



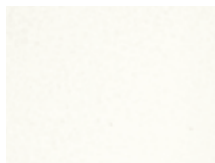
KKG
Kittgrau
Putty grey
(~ RAL 060 70 10)



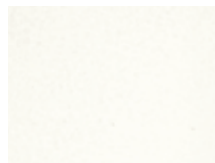
KWG
Wolkengrau
Cloud grey
(~ RAL 220 70 05)



KEG
Eisengrau
Iron grey
(~ RAL 7011)



KVW
Verkehrsweiß
Traffic white
(~ RAL 9016)



KFW
Weiß (flammschützend)
White (flame retardant)



KGS
Graphitschwarz
Graphite black
(~ RAL 9011)

Fiore

Ganzschale

Buche natur oder CPL
Standard: Buche natur (HBN)

Full shell

Natural beech or CPL
Standard: natural beech (HBN)



HBN
Buche natur
Natural beech



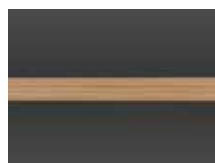
HON
Eiche natur
Natural oak



HNN
Nussbaum natur
Natural walnut



HCWW
CPL weiß (beidseitig)
CPL white (both sides)



HCSS
CPL schwarz (beidseitig)
CPL black (both sides)

Teo, Shape elan visitor

Kunststoff-Farben

Plastic colours

* nur für Teo 1 | only for Teo 1



KXW*
Verkehrsweiß
Traffic white
(~ RAL 9016)



KGS
Graphitschwarz
Graphite black
(RAL 9011)

Eddy

Kunststoff-Farben

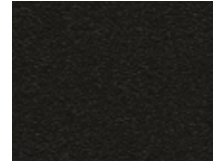
Plastic colours



KBG
Basaltgrau
Basalt grey
(~ RAL 7012)



KVW
Verkehrsweiß
Traffic white
(~ RAL 9016)



KGS
Graphitschwarz
Graphite black
(RAL 9011)

Reefs/Reefs flex

Tischplatten

Tabletops

* nur Reefs | only Reefs



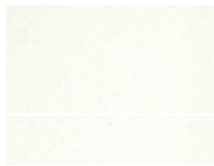
OHXW*
HPL weiß, Kante weiß
HPL white, black white



OHGS*
HPL schwarz,
Kante schwarz
HPL black,
black edge



OHON*
HPL Eiche natur,
Kante schwarz
HPL natural oak,
black edge



OMXW
Melamin weiß,
Kante ABS weiß
White melamine,
white ABS edge



OMGS
Melamin schwarz,
Kante ABS schwarz
Black melamine,
black ABS edge



ODON
Dekor Eiche natur,
Kante ABS Eiche natur
Natural oak finish,
natural oak ABS edge

Atelier

Tischplatten

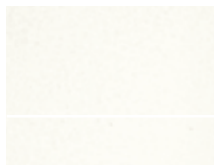
* nur Atelier worklounge

** nur Atelier Beistelltische

Tabletops

* only Atelier worklounge

** only Atelier side tables



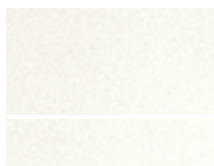
OMXW
Melamin weiß,
Kante ABS weiß
White melamine,
white ABS edge



OMGS
Melamin schwarz,
Kante ABS schwarz
Black melamine,
black ABS edge



ODON*
Dekor Eiche natur,
Kante ABS Eiche natur
Natural oak finish,
natural oak ABS edge



OHXW**
HPL weiß, Kante weiß
HPL white, black white



OEON**
Echtholz Eiche natur
Real natural oak wood

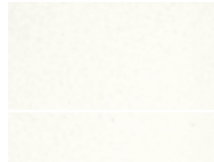
Fiore

Tischplatten

Tabletops



OMGS
Melamin schwarz,
Kante ABS schwarz
Black melamine,
black ABS edge



OMXW
Melamin weiß,
Kante ABS weiß
White melamine,
white ABS edge

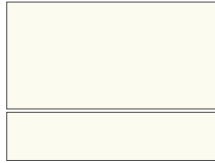


OHXW
HPL weiß, Kante schwarz
HPL white, black edge

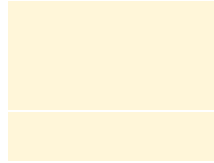
Fiore nesting

Tischplatten H1
(Kante gleichfarbig)

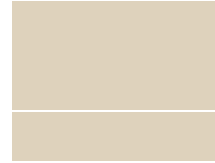
Table tops H1
(Edge in the same colour)



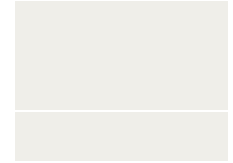
OHRW (105)
Reinweiß
Pure white



OHEW (D403)
Elfenbeinweiß
Ivory white



OHLY (0147)
Lichtgelb (Eierschale)
Light yellow (eggshell)



OHPG (0135)
Perlgrau
Pearl grey



OHAG (10622)
Anthrazitgrau
Anthracite grey



OHGS (0901)
Graphitschwarz
Graphite black



OHBN (4306)
Dekor Buche
Beech decor

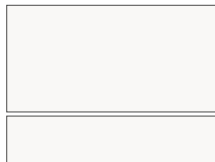


OHON (4548)
Dekor Eiche
Oak decor

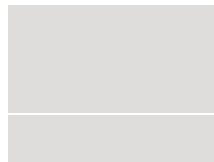
Fiore nesting

Tischplatten H2 - Antifingerprint
(Platte 19 mm, Kante gleichfarbig)

Table tops H2 - traceless premium
(Table top 19 mm, edge in the same colour)



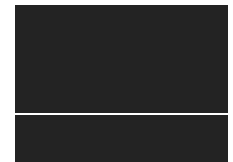
OHVW (9410-TP)
Verkehrsweiß
Traffic white



OHLG (0164-TP)
Lichtgrau
Light grey



OHGG (10630-TP)
Graphitgrau
Graphite grey



OHSG (0901-TP)
Schwarzgrau
Black grey

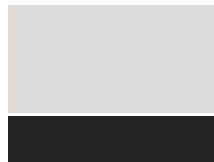
Fiore nesting

Tischplatten H4 - Antifingerprint
(Platte massiv 10 mm, Kante schwarz, Ecken gerundet)

Table tops H4 - traceless premium
(Table top 10 mm solid, edge in black, rounded edges)



OHVW (9410-TP)
Verkehrsweiß
Traffic white



OHLG (0164-TP)
Lichtgrau
Light grey



OHGG (10630-TP)
Graphitgrau
Graphite grey



OHSG (0901-TP)
Schwarzgrau
Black grey

Fiore nesting

Tischplatte Whiteboard
(Platte 19 mm, Kante schwarz)

Table tops Whiteboard
(Table top 19 mm, edge in black)



OHLG
Lichtgrau
Light grey

www.dauphin.de
dauphin-group.com

Hersteller & Vertrieb | Manufacturer & Distribution:

Dauphin HumanDesign® Group GmbH & Co. KG
Espanstraße 36
D-91238 Offenhausen
+49 9158 17-700
info@dauphin-group.com

Vertrieb Schweiz | Distribution Switzerland:

ZÜCO Bürositzmöbel AG
Schuppisstrasse 7
CH-9016 St. Gallen
+41 71 775 87 87
info@zueco.com

DAUPHIN